

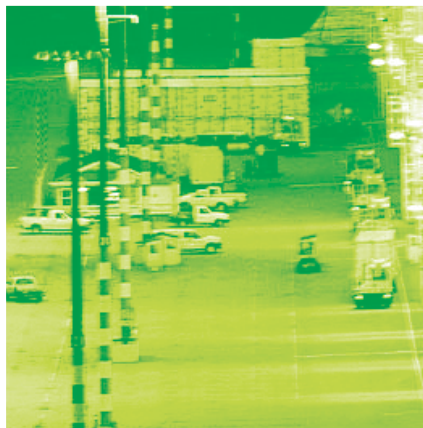
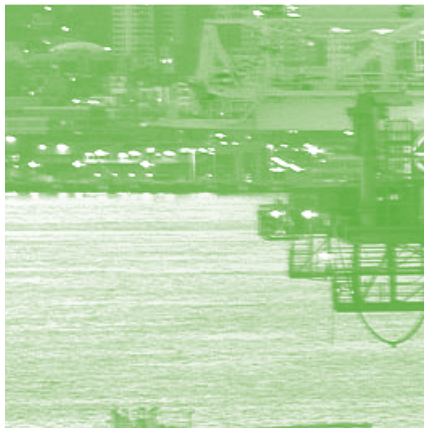
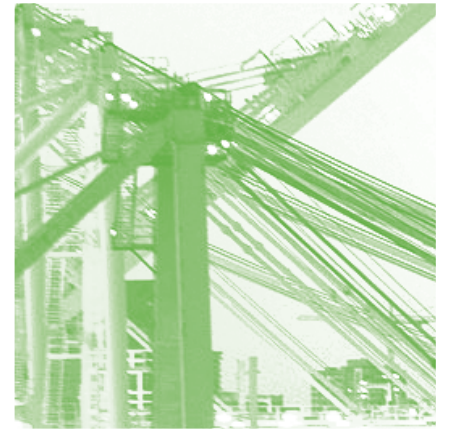


FOUNDED 1949



ANCHORED IN SEATTLE, WA

SSA Marine and affiliates* have deep roots in the Pacific Northwest. Founded by Fred R. Smith in 1949 as Bellingham Stevedoring Company, we began our first cargo handling operations in a small corner of Washington State. Driven by a pioneering spirit, our family-owned company sought opportunities to expand terminal operations up and down the West Coast, throughout the U.S. and into international markets. As the region transformed into a major international market, we were positioned to serve the increasing demand throughout the Pacific. Today, we have become a global enterprise spanning more than 250 operations across five continents.





EXPANDING GLOBAL ENTREPRISE





EXPAND OPPORTUNITY

Together we make the world a smaller place. As one of the largest privately owned marine terminal & rail yard operators in the world, we bring global markets closer to customers.

OPPORTUNITY

With port operations across five continents and a vast network of interconnected transportation solutions, we open new opportunities that accelerate the growth and pace of global business.

SSA Marine makes intentional investments in the people, places and practices that address our customers' needs. By continually expanding our reach and capacity, modernizing our processes and developing our employees, we drive prosperity for our customers around the world.

HUMAN INTEREST

We believe investing in our people pays big dividends for our customers.

At SSA Marine, people are the cornerstone of our operations. We are proud to have the most highly skilled, productive employees in the industry. We provide proprietary training and ongoing professional development, while encouraging career advancement from within. We believe this raises job proficiency, fosters creative thinking and improves employee satisfaction. In turn, customers reap the benefits of a workforce that delivers shorter turn times, responsive service and the confidence that cargo is being handled with the greatest care and efficiency.

WELL CONNECTED

With locations in more than 250 strategic operations around the world, SSA Marine is unmatched in skill and experience. We understand the complexities of international transportation. Working together with customers, partners and government authorities, we collectively solve challenges and create solutions that address the business needs. Though already one of the largest terminal operators in the world, we are continually expanding our operations - developing new marine, rail and ancillary services to provide even greater connections to global market opportunities for our customers.

DRIVE TO INNOVATE

Improving the customer experience is the heart of everything we do. So we make purposeful investments in modernization and technical innovations that deliver the greatest customer benefits. Whether it's RFID technologies that eliminate paperwork, or expedited gate transactions and yard moves that accelerate vessel turn times, we seek to optimize productivity and efficiency at every handling point.



Photo courtesy of the Port of Long Beach

32.4 MILLION

SSA Marine handles 32.4 million marine & rail Twenty-foot Equivalent Units (TEUs) each year.

110.5 MILLION

SSA Marine handles over 110.5 million tons of conventional cargo worldwide each year.

7.4 MILLION

SSA Marine handles 7.4 million cruise passengers each year





TERMINAL OPERATIONS

We are one of the world's largest privately-held international marine terminal operators.

Additional services for a comprehensive transportation solution.

RAIL	TECHNOLOGY	AUTO/RORO	CRUISE
<p>Rail Management Services is one of the largest rail yard operators in the world.</p> <ul style="list-style-type: none">Over 30 years experience in rail management for expert cargo handlingConvenient on-dock and near-dock rail access for smooth inland connectionsContracts with all major U.S. Class 1 railroads, providing multiple transportation optionsComprehensive intermodal services including trucking services, lift-on/lift-off, auto ramp equipment and trailer maintenance and repair	<p>Tideworks Technology is a world leader in full-service terminal operations software.</p> <ul style="list-style-type: none">Increased operational insights for more informed decision-makingEnhanced vessel, terminal and gate productivity to save time and improve throughputReduced paperwork and delays, leading to greater operational efficiencies	<p>A complete logistical service in the finished vehicle & RoRo supply chain.</p> <ul style="list-style-type: none">Provide stevedoring services, terminal handling, processing and multi-modal distribution for OEMs and their supply chain logistic partnersA comprehensive approach to the movement of vehicles and other RoRo cargo from factory to end customerOver 40 years experience in handling all types of military RoRo, automobiles and RoRo cargoWork with our customers' suppliers to ensure quality at every point in the logistics chain	<p>The leading operator & service provider of cruise facilities in Alaska, the Pacific Northwest & Mexico.</p> <ul style="list-style-type: none">World class cruise facilitiesIdeal berthing capabilitiesSafe, friendly and accessible environments for passengersWide array of port services and commercial area available for visitorsTour operations and dispatch services

CONTAINER

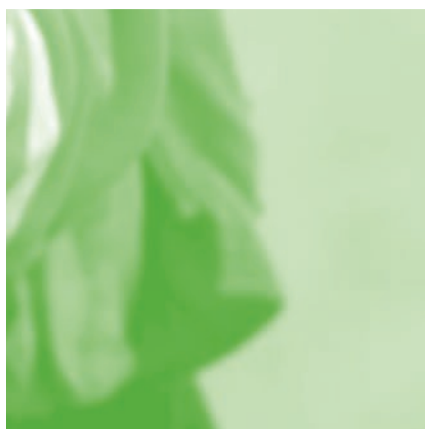
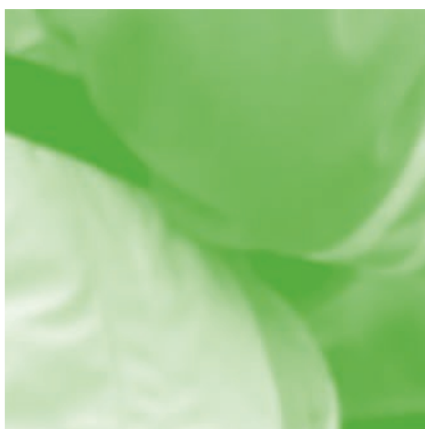
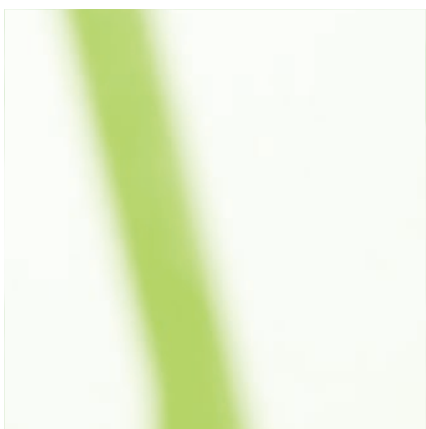
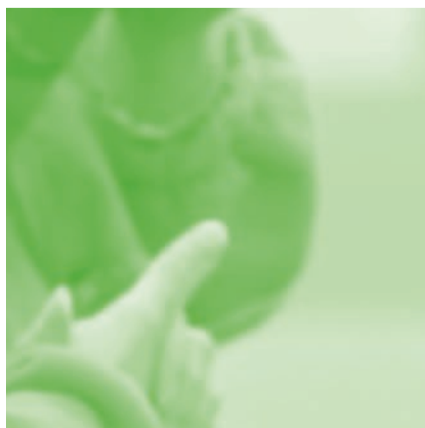
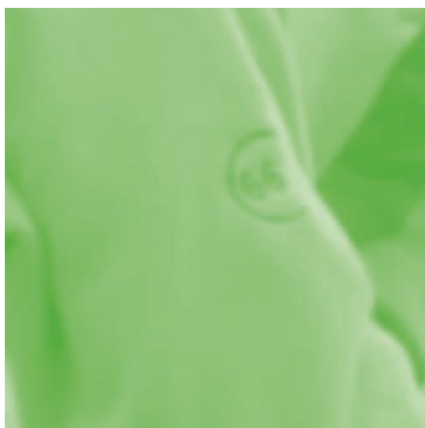
The preeminent global container terminal operator.

- Multiple terminals and market shares makes us a significant factor in the Western Hemisphere, as well as an expanding footprint in Asia and Africa
- Operations in strategic geographic locations around the world where our customers' businesses are expanding
- 2nd largest container terminal operator in the Americas

CONVENTIONAL

Experts at handling every form of cargo using the safest & most efficient methods in the industry.

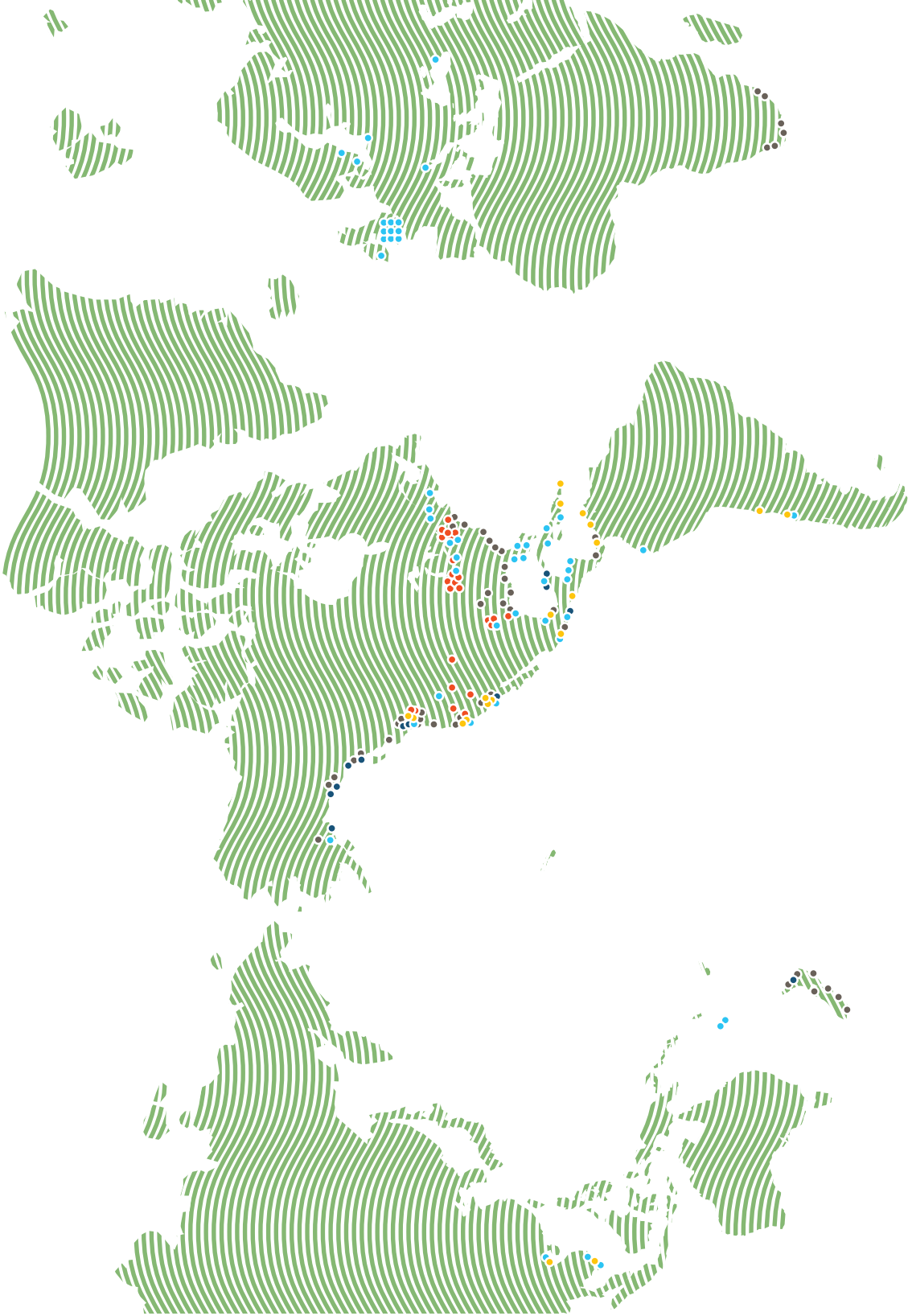
- Over 200 operations across 5 continents
- U.S. operations in every key location on the West Coast, Gulf Coast and South Atlantic
- Versatile equipment and operations to handle every dry commodity (forest products, grain, steel, fruit, pulp, mineral ores, seafood, heavy machinery, yachts and more)



ACCELERATE THE PACE OF BUSINESS



LOCATIONS	
USA / NW	CANADA
Aberdeen, WA Astoria, OR Coos Bay, OR Eureka, CA Everett, WA Pacific Terminal Kalama, WA Port of Kalama Longview, WA Olympia, WA Port Angeles, WA Portland, OR (T2) Portland, OR (T5) Seattle, WA (Cruise) Seattle, WA (T5) Seattle, WA (T18) Seattle, WA (T30) Tacoma, WA	Duncan, BC Cowichan Bay North Vancouver, BC Vancouver, BC Victoria, BC Nova Scotia Quebec
USA / SW	EUROPE
Benicia, CA Crescent Warehouse, Ltd. Long Beach, CA (C60) Long Beach, CA (PCT) Long Beach, CA (Pier F) Long Beach, CA (Terminal A) Oakland, CA (B63) Oakland, CA (OICT) Port Hueneme, CA San Diego, CA (Conventional) San Diego, CA (Cruise) San Pedro, CA Stockton, CA West Sacramento, CA	Denmark Georgia Ireland Netherlands Poland Slovenia United Kingdom
USA / SE	MEXICO
Brunswick, GA (Colonel's Is.) Brunswick, GA (Mayor's Pt.) Charleston, SC (Columbus St.) Charleston, SC (Navy) Charleston, SC (North Pier) Charleston, SC (Union Pier) Charleston, SC (Mando Welch) Georgetown, SC Jacksonville, FL (Blount) Jacksonville, FL (Ed Austin) Jacksonville, FL (Valleyland) Morehead City, NC Savannah, GA (Garden) Savannah, GA (Ocean) Wilmington, NC	Acapulco Cozumel Lázaro Cárdenas Manzanillo, Colima Progreso, Yucatán Tijuana Veracruz
USA / GULF	CENTRAL AM.
Columbus, MS Gulfport, MS Houston, TX Little Rock, AR Mobile, AL New Orleans, LA Panama City, FL Pascagoula, MS Port Arthur, TX Port Blenville, MS	Costa Rica Guatemala Honduras Panama
CARIBBEAN	S. AMERICA
Bermuda Jamaica Puerto Rico	Santa Marta, Colombia Talcahuano, Chile Valparaíso, Chile Ecuador
VIETNAM	VIETNAM
Bau Ria Vung Ta, Vietnam Ha Long City, Vietnam	Bau Ria Vung Ta, Vietnam Ha Long City, Vietnam
OCEANIA	OCEANIA
Auckland, NZ Bluff, NZ Gisborne, NZ Lyttelton, NZ Napier, NZ Nelson, NZ New Plymouth, NZ Port Chalmers, NZ Taunanga, NZ Timaru, NZ Wellington/Marsden Pt., NZ Whangarei/Marsden Pt., NZ New Caledonia	Auckland, NZ Bluff, NZ Gisborne, NZ Lyttelton, NZ Napier, NZ Nelson, NZ New Plymouth, NZ Port Chalmers, NZ Taunanga, NZ Timaru, NZ Wellington/Marsden Pt., NZ Whangarei/Marsden Pt., NZ New Caledonia
OPERATIONS	
CONTAINER	RAIL / INTERMODAL
CONVENTIONAL	TECHNOLOGY
CRUISE	



LOCATIONS

EXPERTISE THAT MATTERS



As a leader in conventional cargo terminals, stevedoring and operations for over 70 years, our people, capacity and commodity expertise deliver the highest level of service in the industry.

With a large inventory of specialized cargo handling equipment, we flexibly reposition resources throughout our network to meet our customers' needs. In addition, for cargo with unique handling requirements, we work with our customers to design and develop specialized equipment to ensure the most efficient loading and unloading.

KEY BENEFITS

MOST EXPERIENCED STAFF IN THE INDUSTRY

Our workforce is rigorously trained according to cargo type, so customers have confidence that their goods are being handled with the utmost care and expertise. In addition, we deploy skilled, experienced people to any of our locations around the world depending on a customer's cargo handling requirements, enabling us to put the right people in place to get the job done.

EVERY TYPE OF DRY CARGO

We handle virtually every type of cargo in both ocean and river water operations. With specialized equipment and creative handling and storage solutions, we have the flexibility to meet customers' unique product requirements. Whether it's oversize cargo, CFS, stuff/un-stuff, bagging or other services, we are skilled and equipped to efficiently handle any commodity in the world.

CUSTOMER COLLABORATION

Our collaborative approach means we go beyond the terminal to provide product-specific solutions aligned with the needs of our customers. These might include specialized warehousing for bulk goods or regional distribution center for other off-dock development.

CONVENTIONAL



CARGO

Virtually every dry bulk commodity: forest products, grain, steel, fruit, pulp, mineral ores, seafood, heavy machinery, yachts, project cargo and more

LOCATIONS

U.S. operations in nearly every port on the West Coast, Gulf Coast and South Atlantic

Over 200 operations across 5 continents

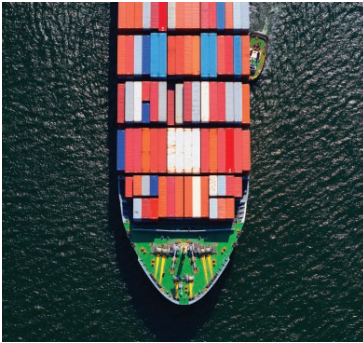
KEY FACTS

**110.5
MILLION**
tons of conventional cargo per year

**7.4
MILLION**
cruise passengers per year

**3.8
MILLION**
autos per year

PERFORMANCE AT THE PACE OF BUSINESS



As a world leader in container terminals and management, stevedoring and terminal development, we offer high-performance container operations. As an independent terminal operator, we balance the needs of all our customers – ensuring convenient access to berth windows and crane allocation to accelerate vessel throughput and turn times.

KEY BENEFITS

PEOPLE WITH EXPERIENCE AND EXPERTISE

Our people know this business. SSA Marine's operation employees attend our proprietary Operations College, ensuring a skilled, trained workforce on the dock. Our managers have risen from within the company, giving them the expertise to understand customer needs and respond with creative solutions. With our experts on the job, customers reap the benefits of a high productivity workforce, including shorter turn times, outside-the-box thinking, exceptional service and support and greater peace of mind.

HIGH-EFFICIENCY TERMINAL OPERATIONS

Our container terminal operations anticipate and align with customer demands: efficient, productive and ready for the future.

- Efficient truck turn time and a fully automated paperless gate to increase throughput and flexibility

- State-of-the-art container handling equipment and technology to streamline terminal operations

- Advanced technologies at marine terminals for easy sorting, wheeled operations and RTG

- Secure yards with round-the-clock monitoring

FORWARD-THINKING PARTNERS

As our customers grow their businesses, we work in partnership to design, develop and operate terminals in their local markets – and prepare for future expansion.

CONTAINER



KEY FACTS

**17.2
MILLION**
marine TEUs per year

**18
LEASES**
long-term & concessions

21-47%
market share in the major
U.S. West Coast ports

44%
West Coast market share in Mexico

55%
Atlantic Coast market share
in Panama

43-56%
market share in Chile
regions V & VIII

VALUE-ADDED SERVICES

- Auto handling
- Chassis pool
- On-dock/near-dock rail
- Line handling
- On-dock equipment storage
- On-dock container equipment maintenance
- Reefer monitoring
- CFS/container stuffing and unstuffing

GLOBAL MARKET LEADER

With the largest market share of the U.S. West Coast, Gulf Coast and South Atlantic – & strategic international locations in Mexico, Panama, Chile, Colombia & Vietnam.

ADVANCING PRODUCTIVITY



Tideworks provides comprehensive terminal operating systems specifically designed to improve the efficiency of terminal operations. We leverage proven industry practices – combined with our decades of IT and terminal operation experience – to deliver customized solutions that increase productivity, enhance communication with customers and partners and reduce vessel turn times.

KEY BENEFITS

PROVEN TRACK RECORD

Tideworks was launched in 1999 following 30 years as the technology division for Carrix, Inc. Today, logistics professionals around the world use our systems on a daily basis to load vessels and trains, track containers, and make payments at over 120 marine and intermodal terminals.

24/7 SUPPORT

With offices in many geographic locations around the world, we provide customers with round-the-clock technical support to ensure uninterrupted service and smooth operations.

STREAMLINED OPERATIONS

Tideworks eliminates paperwork and modernizes operations at the gate and on the dock, yielding higher productivity across all aspects of terminal operations.

- Seamlessly integrates with automated gate solutions to accelerate truck transactions, yielding faster turn times and increased gate capacity.
- Electronically dispatched work orders deliver move instructions to equipment operators at the right time.
- Graphical inventory tracking provides greater visibility, yard accuracy and data integrity.
- One-click load planning and advanced workflow tools ensure optimized operations for every vessel and rail visit.

TECHNOLOGY



MAINSAIL VANGUARD®

Gives you complete visibility and control of your terminal operations, with rich reporting tools; modules for billing, CFS and RoRo cargo; and user-friendly customer access via Forecast®. The system is highly configurable and completely customizable to the needs and preferences of the user. Mainsail has the proven ability to scale to well over two million TEUs per year per terminal.

FORECAST®

Helps terminals reduce customer service costs and streamline gates by providing online access to up-to-date cargo and terminal information. Depending on their profile, customers can run a variety of reports, submit and edit bookings, check container availability and even pay fees online. Automated email notifications proactively answer your customers' questions with reduced overhead for the terminal.

SPINNAKER PLANNING MANAGEMENT SYSTEM®

Fully integrates vessel, berth, yard and rail planning tools in one workspace to streamline operations. Spinnaker effortlessly adapts to your existing operation and can be quickly updated when your infrastructure or workflow changes. Spinnaker collaborates in real-time with Traffic Control™ ensuring planned moves are efficiently executed.

TRAFFIC CONTROL™

Reduces paperwork and radio chatter by turning planned moves into executable, electronic work orders for equipment operators. Flexible management tools allow you to zone and pool equipment, configure operator interfaces, and dispatch instructions at the optimal moment. Traffic Control's user-friendly interface makes controlling all operations and handling equipment simple and straightforward.

TERMINAL VIEW™

3D visibility tool provides a dynamic, three-dimensional visualization of all terminal assets and operations. Intuitive controls allow you to fly through your terminal or zoom into a specific area and scan operations in real-time and in three dimensions. Instantly view the location and idle time alerts for every piece of handling equipment at your facility to optimize asset utilization. Visualize potential bottlenecks and take corrective action to increase your terminal's productivity.

GATEVISION®

Provides a flexible, modular gate operating system to streamline processes and accelerate gates. A combination of cameras, software, and Tideworks' proprietary kiosks, GateVision removes clerks from the lanes, improves worker safety, and reduces your operating costs. Optional integration with OCR and other automation technologies further increases accuracy and gate velocity.

INTERMODAL PRO®

Helps terminal operators achieve greater productivity, increased customer satisfaction and substantial cost savings with the most intuitive graphical tools on the market. The system eliminates the guesswork from planning, making it faster and easier to manage yard operations, load and unload trains, run gate operations and report on every facet of the operation. Used by leading companies around the world, Intermodal Pro offers speed, flexibility and reliability. The system maximizes terminal space utilization by automating container and chassis location assignments based on your operational criteria.

BEYOND THE MARINE TERMINAL



Rail Management Services is one of the world's largest rail yard operators. We contract with all U.S. Class 1 railroads to streamline and accelerate the movement of overland cargo, helping to provide a complete door-to-door transportation solution.

With over 30 years of experience in rail yard management, we understand that every railroad has unique handling requirements depending on cargo type and geographic location. We work in tandem with our customers to develop innovative solutions and equipment to address the local needs of each rail operation.

RAIL

KEY BENEFITS

EQUIPPED FOR EFFICIENCY

Together with our railroad customers, we provide a comprehensive suite of rail yard operations and services to ensure smooth, efficient cargo transitions between land and sea.

- Intermodal lift-on/lift-off operations
- Lift equipment maintenance
- Hostler maintenance
- Intermodal switching
- Trailer, container and chassis repair
- Gate management
- Trucking services
- Auto ramp equipment

SAFETY AND EXPERIENCE

As the market leader in rail yard management, we have the experience and expertise to operate any type of intermodal terminal. Our operations range in size and scale to meet customers' needs, with our highest volume locations handling more than 900,000 annual lifts. In addition, our trained staff of more than 1,900 employees is dedicated to ensuring efficient, responsive service while our first class maintenance and safety programs ensure the protection of all workers and cargo.



KEY FACTS

15.2
MILLION

TEUs per year

8.9
MILLION

annual lifts per year

800+
TRUCKS

more than 800 hostler yard trucks

54
FACILITIES

in 15 U.S. States

1.2
MILLION

autos unloaded

100+
DEVICES

over 100 intermodal lift devices

MOVING BUSINESS FORWARD



Carrix and affiliates* keep business moving. As one of the world's largest privately held marine terminal and rail yard operators, we have the transportation experience, breadth and diversity to drive global shipping forward.

Since 1949, we have continuously expanded and developed our business in alignment with our customers' needs and interests. Through investments in our people, high-value locations, and technology-driven efficiencies, we have a proven track record of delivering exceptional service to our customers around the world.

*Carrix, affiliates, subsidiaries and joint ventures.

CARRIX

KEY BENEFITS

PEOPLE DRIVEN

Our employees are our most valuable asset, so we invest in their long-term career development – empowering them with skills and experience unmatched in the industry. Our operations staff and senior managers average over 20 years with the company, and we provide both specialized and complementary task training that elevates employees' productivity, expertise and satisfaction. Customers benefit from a highly efficient workforce of hands-on problem solvers focused on delivering the highest level of cost-effective service.

PARTNERSHIPS

We have more than 30 strategic alliances with the world's major shipping lines, shippers, partner companies, governments, and across the industry – all to provide the most comprehensive transportation offerings and services in the world. We value our solid, long-lasting relationships with customers, allowing us to work together in developing creative solutions for their near-term and future business requirements.

POSITIONED FOR GROWTH

Our portfolio of assets and business lines – diversified across geographic locations and cargo types – provides stability during market fluctuations. We have long-term control and a significant market share of terminal operations in strategic locations around the world. In addition, we are expanding terminal development and operations in many more global markets, positioning us for continued further growth.

CONTAINER

18 long-term leases and concessions

17.2 million marine TEUs in per year

State of the art equipment and computer systems

70 years of best practice, real-world experience

Significant capacity and market opportunity to grow

CONVENTIONAL

Nearly 200 operations globally, including leases and concessions

General and project cargo, bulk, RoRo and cruise

7.7 million cruise passengers and 3.8 million autos per year

Versatile equipment and services for specialized cargo

110.5 million tons of conventional cargo handled per year

RAIL

54 rail and intermodal facilities in 15 U.S. states

Over 30 years of experience in expert rail management

Full-service operations including trucking, lift-on/lift-off, auto ramp equipment, and trailer maintenance and repair

15.2 million rail TEUs annually

TECHNOLOGY

Serving more than 120 marine and intermodal terminals

CONTAINER

17.2
MILLION

marine TEUs per year

Significant capacity
& market opportunity
to grow



CONVENTIONAL

3.8
MILLION

automobiles handled annually

CONVENTIONAL

7.4
MILLION

cruise passengers per year



CONVENTIONAL

110.5
MILLION

tons of conventional cargo
handled per year

General & project
cargo, bulk, RoRo
& cruise



RAIL

15.2
MILLION

rail TEUs annually