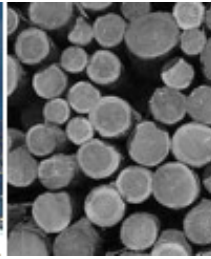


/Pacific  
Northwest
**SSAMarine**  
 A Carrix Enterprise


Container



Conventional



Cruise

## Port Angeles

### Specifications and Services

SSA Marine operates at the public Piers at the Port of Port Angeles. The port is presently utilizing its terminal berths for lay berths, topside repair berthing and barge loading.

**Location:** On the Olympic Peninsula at the entrance to Puget Sound about 50 miles west of Port Townsend

**Size:** 5 acres

**Water Depth:** 42 feet

**Berths:** 1

**Total Berthing Length:** 455 feet

**Commodities Handled:**

- Logs
- Lumber
- General cargo

**Storage:** Open storage available

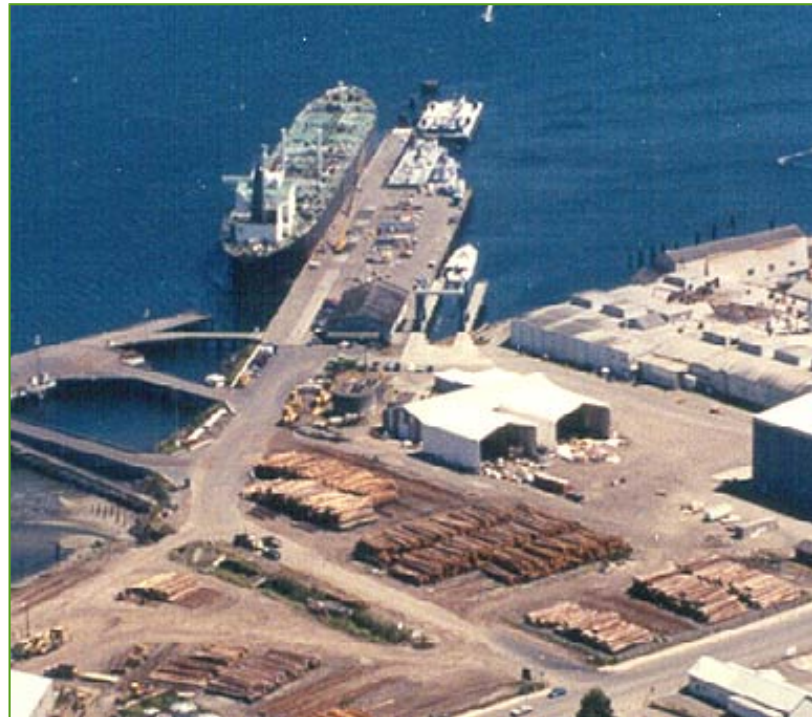
### Contact Information

**Rolf Hansen - General Manager**  
**604 Marine Drive**  
**Port Angeles, WA 98363**

**Tel: 425/259-8193 | 206/382-2549**

**Fax: 425/258-2045**

**Email: [rolf.hansen@ssamarine.com](mailto:rolf.hansen@ssamarine.com)**



### Driving Directions

- Enter Port Angeles on Highway 101, which will become East Front St.
- Continue on East Front St. and bear right onto Marine Dr.
- The office will be on the left at the intersection of South Cedar St. and Marine Dr.

Copyright © 2004 SSA Marine. All rights reserved.