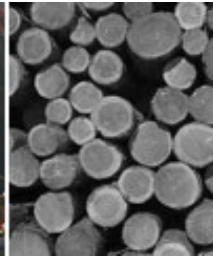


/Pacific
NorthwestSSAMarine
A Carrix Enterprise

Container



Conventional



Cruise

Aberdeen

Specifications and Services

SSA Marine operates in Aberdeen at the Port of Grays Harbor, which is Washington's only deep-water port on the Pacific Ocean.

Location: Centrally located between Seattle and Portland on the Pacific Ocean and less than 2 hours to open sea

Size: 300 acres

Water Depth: 30 and 41 feet

Berths: 5

Total Berthing Length:

- Terminal 1: 480 feet
- Terminal 2: 600 feet
- Terminal 3: 600 feet
- Terminal 4: Twin berth 1,400 feet

Cranes: Terminal 4: 2 50-ton cargo cranes

Commodities Handled:

- Forest products (logs, lumber, wood chips, pulp, aluminum, steel, plywood, granite)
- Bulk (agricultural products and bulk loading facility at Terminal 2)
- Heavy-lift and project cargo
- Specialty cargo

Scales: Certified truck scales and weight scales on forklifts

Rail Services: Rail America, which provides connections to Burlington Northern Santa Fe (BNSF) and Union Pacific (UPRR) railroads
On-dock rail service - room for 45 rail cars on-dock

Reefer Service: Portable reefer generator sets available

RoRo Services: Provided at Terminal 4

Heavy Lift Service: Terminal 4 handles and provides services for project and heavy lift cargo. The Port of Grays Harbor provides secured facility

Contact Information

Jeff Olsen - General Manager
102 South Maple
Suite 100
Aberdeen, WA 98520

Tel: 360/532-4650

Fax: 360/ 532-8105

Email: jeff.olsen@ssamarine.com



and short and long term storage for cargo.

Storage:

- Terminal 2: 75 acres paved, secured cargo yard and near dock warehousing
- Terminal 3: 150 acres
- Terminal 4: 75 acres paved, secured cargo yard and 110,000 square feet on-dock warehouse
- Dry warehousing storage and short and long term storage available

Transit Shed: 110,000 square feet at Terminal 4

Warehouses: 150,000 square feet of covered, secured on-dock warehouse.

Fumigation Facilities: By arrangement.

Foreign Trade Zone: #173 covers 587 acres

Highway Access: 4-lane state highway to the coast north of San Francisco, One hour to I-5

Automated Appointment System: Available upon request



Driving Directions

- From Interstate 5 take Exit 104 at Olympia, WA
- Go West on Highway 101 which turns into Highway 8 and then Highway 12
- Go approximately 55 miles to Aberdeen, WA

Copyright © 2004 SSA Marine. All rights reserved.